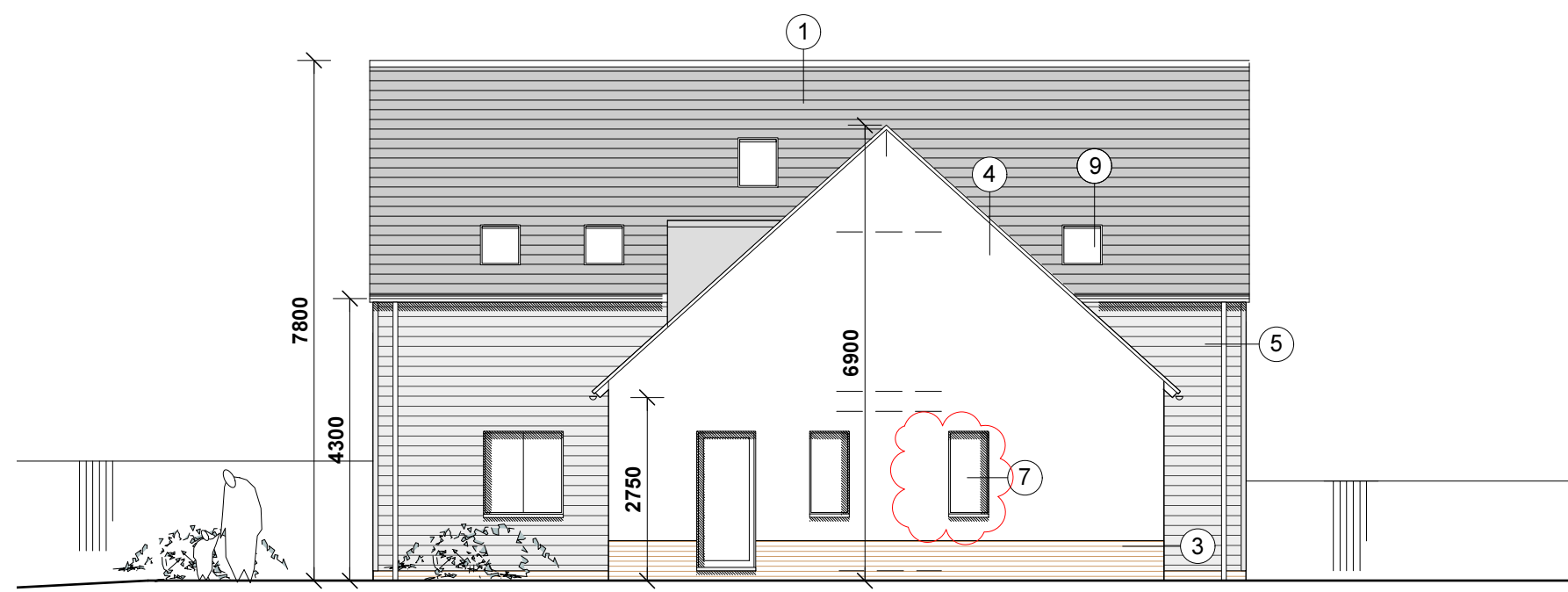
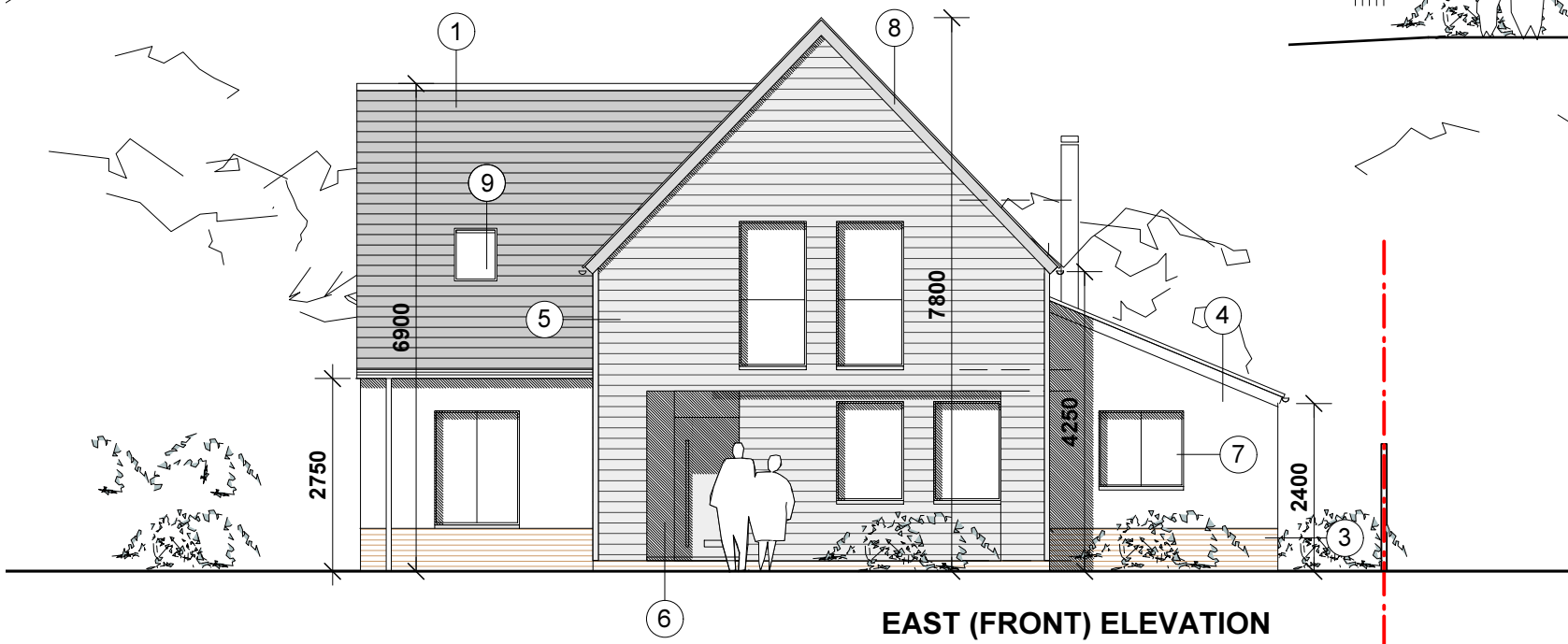


**KEY TO MATERIALS:**

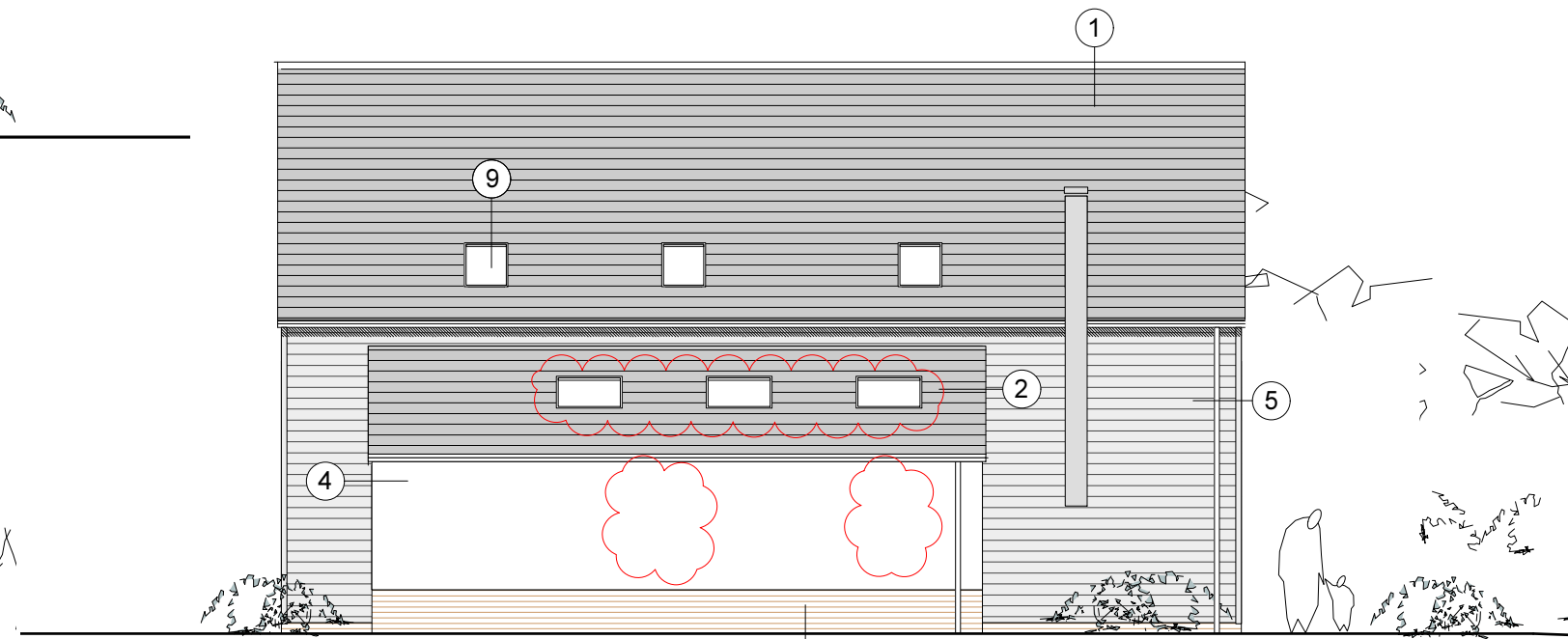
- 1 - natural slate
- 2 - natural slate
- 3 - soft red brick plinth/ chimney (Imperial bricks ltd - 'soft red multi')
- 4 - painted render (white)
- 5 - painted feather edge weatherboarding (sadolin superdec RAL 7044 'silk grey')
- 6 - ppc aluminium door frames/ composite front door (RAL 7039 'quartz grey')
- 7 - ppc aluminium window frames (RAL 7039 'quartz grey')
- 8 - painted softwood barge boards/ soffits (sadolin superdec RAL 7044 'silk grey')
- galvanised rainwater goods
- 9 - velux rooflights



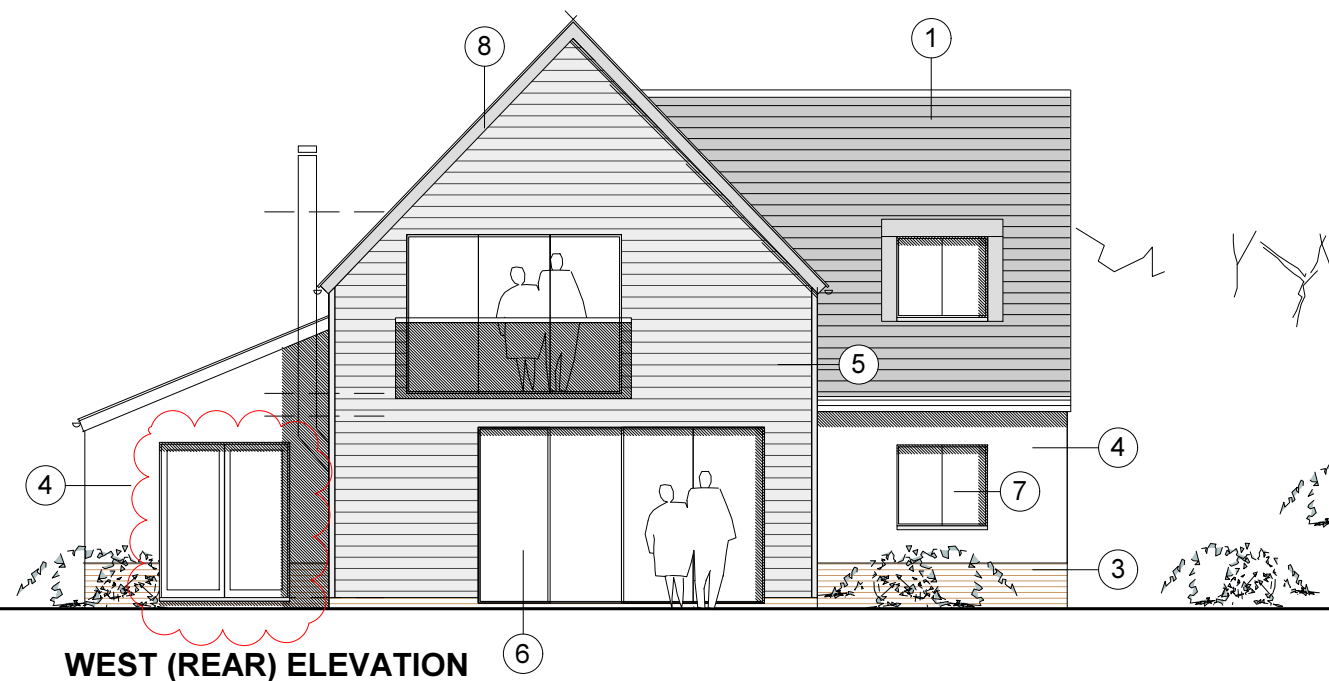
**SOUTH (SIDE) ELEVATION**



**EAST (FRONT) ELEVATION**



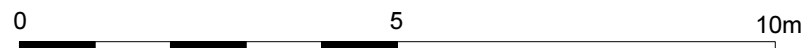
**NORTH (SIDE) ELEVATION**



**WEST (REAR) ELEVATION**

**Revisions**

A - 09.03.2021: 3 x rooflights added to kitchen, window amended to double door to west elevation, windows to north elevation omitted, window to south elevation reduced in width. Step in ground floor level omitted. Plain tile roof amended to natural slate, vertical larch cladding amended to painted weatherboarding. Window, door and joinery colours amended.



**PLANNING**

Project <b>CORNER COTTAGE, HOLLOW LANE, THURSTON</b>			hitchcock architects ltd 18 The Avenue Sunbury-on-Thames Middx TW16 5ES m: 07855 522478 e: andrew@hitchcockarchitects.co.uk w: www.hitchcockarchitects.co.uk
Drawing <b>PLOT 02 (NEW DWELLING) - PROPOSED ELEVATIONS</b>			
Drawing No. <b>CCHL-13A</b>	Scale <b>1:100 @ A3</b>	Date <b>25.04.2019</b>	<b>h<sup>a</sup></b>